



**PI 1983**  
For technical personnel only!  
1/2

# PRODUCT INFORMATION

## WARNING ABOUT PRODUCT FAKES

### OF THE CWA 400 ELECTRIC COOLANT PUMP

Product: CWA 400 electric coolant pump		Vehicles	
Pierburg no.	Ref. no.*	Vehicle applications	Engine
7.03665.66.0	11 51 7 604 027, 11 51 8 625 097, 11 51 8 635 089	BMW 1, 2, 3, 4, 5, X1, X3, X4, X5, X6, Z4	N20 B20, N26 B20

**IT HAS COME TO OUR ATTENTION THAT THERE ARE PRODUCT FAKES OF THE CWA 400 ELECTRIC COOLANT PUMP ORIGINATING FROM THE MARKET.**

Investigations in our test laboratory have shown that a less powerful drive has been fitted, which can only achieve approx. 200 Watt.

Thus, the imitation product only provides half of the cooling capacity of a CWA 400 (400 Watt), which is necessary to maintain the required engine cooling (see diagram).

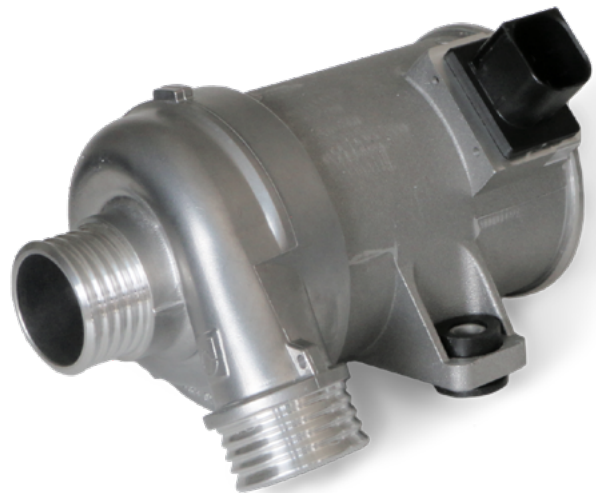
#### **ATTENTION**

**We expressly warn against the use of these product fakes.**

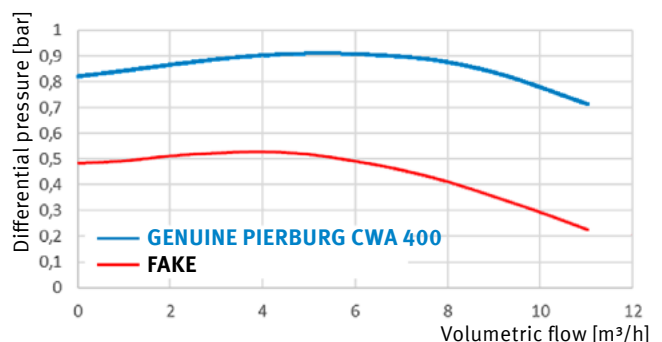
None of the pumps in our possession satisfied the required specifications of the vehicle manufacturer. In the event of a failure of such a pump, the engine overheats and this can result in severe consequential damage.

#### **NOTE**

**For your safety, we take legal steps against any form of illegal import and the introduction to the market of product fakes.**



Genuine Pierburg pump



All content including pictures and diagrams is subject to change. For assignment and replacement, refer to the current catalogues or systems based on TecAlliance.  
\* The reference numbers given are for comparison purposes only and must not be used on invoices to the consumer.



### TECHNICAL FINDINGS

#### Excerpt from the technical findings of the test laboratory:

*"[...] components used are very low quality parts.*

*"[...] significantly reduced durability and increased failure rate is expected."*

*"[...]*

*"Hydraulic performance is only half of the required specification."*

*"[...]*

*"This replica pump is a 200 Watt pump in a CWA400 housing!"*

*"[...]*

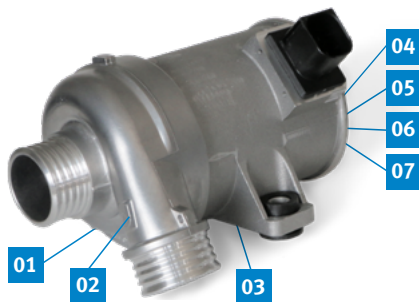
*"Connection technology, vibration and temperature resistance are very critical!"*



### DIFFERENTIATING CHARACTERISTICS

### GENUINE PIERBURG COOLANT PUMP

### FAKE



- 01 Pump housing part number
- 02 Pierburg logo
- 03 Crankcase part number
- 04 Pierburg logo
- 05 Country of origin
- 06 Motorservice part number, data of manufacture
- 07 Data matrix code (DMC)

