

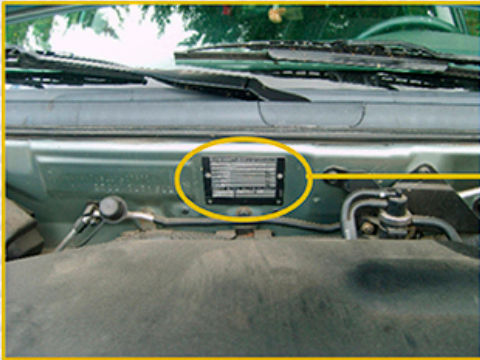
## CHASSIS IDENTIFICATION (ND, SPORT LINE, HD)

Volvo S40 / V40

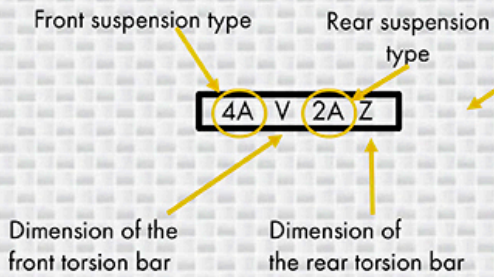


FI086EU

- In order to identify the type of chassis of the Volvo S40 / V40, we need to look at the identification plate placed in the engine compartment under the windscreen wipers.



VOLVO CAR CORPORATION	
X X X X X / X X X X X X X X X X	
YV1MS3906XXXXXXXXXX	
1790	Kg
3190	Kg
1 - 940	Kg
2 - 870	Kg
352-22	7371
22	
<b>4AV2AZ</b>	



	Front Suspension type	Diameter of the torsion bar	Rear suspension type	Diameter of the torsion bar
<b>Standard (ND)</b>	2A/3A/4A/5A/6A	V=diameter 19mm	1A/2A/3A/4A	Z=diameter 13mm
<b>Reinforced (HD)</b>	2B/3B/4B/5B	V=diameter 19mm	1B/2B/3B	X=diameter 16mm
<b>Pilot suspension</b>			1D/2D	
<b>Sport</b>	2C/3C/4C/5C	V=diameter 19mm	1E/2E	X=diameter 16mm
<b>Pilot suspension reinforced</b>			1F/2F	Y=diameter 15mm