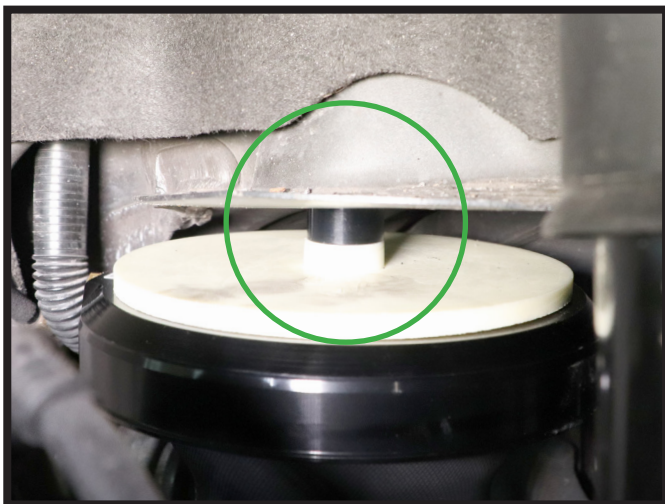




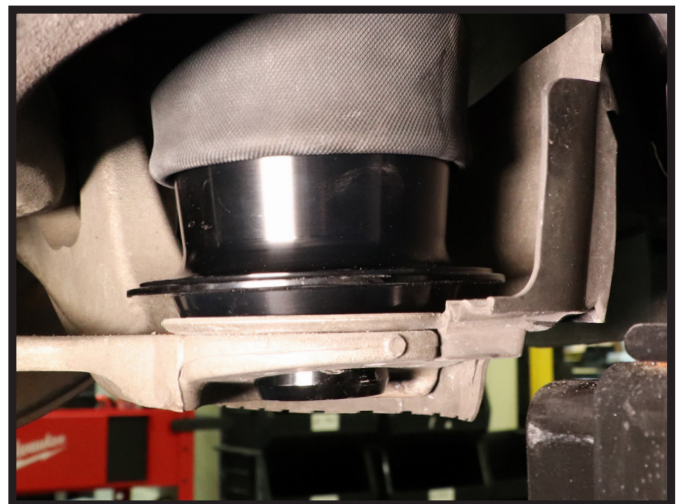
**IMPORTANT NOTICE**  
**FOR PARTS A-3294/3295 AND A-3327/3328**  
**PROPER INSTALLATION & INFLATION PROCEDURES MUST BE**  
**FOLLOWED TO AVOID PERMANENT DAMAGE TO THE PART**

**NOTE: AIR SPRING DUST BOOT HAS BEEN REMOVED FOR DEMONSTRATION PURPOSES**

1. ENSURE THE TOP MOUNT IS IN PLACE. ENSURE THE POSITIONING PIN ON THE BOTTOM OF THE AIR SPRING IS INSTALLED INSIDE THE GUARD AND THAT THE BOTTOM MOUNT IS IN PLACE AS DIRECTED IN THE INSTALLATION MANUAL "INSTALLATION STEPS 1-3."



DUST BOOT NOT SHOWN FOR CLARITY



DUST BOOT NOT SHOWN FOR CLARITY

Arnott<sup>®</sup> is committed to the quality of its products. If you have a question or problem with any Arnott product, please contact Arnott by calling 800-251-8993 during normal business hours or email [techassistance@arnottinc.com](mailto:techassistance@arnottinc.com). (In the EU please call +31 (0)73 7850 580 or email [info@arnotteurope.com](mailto:info@arnotteurope.com))

 **DO NOT LOWER VEHICLE FROM THE LIFT. INFLATE AIR SPRING PRIOR TO LOWERING THE VEHICLE. FAILURE TO DO SO MAY RESULT IN PERMANENT DAMAGE TO THE AIR SPRING AS SHOWN.**



DUST BOOT NOT SHOWN FOR CLARITY



**2. INFLATE THE AIR SPRING USING THE VEHICLE DIAGNOSTIC TESTER FOLLOWING THE "SYSTEM VENTING OR FILLING" GUIDE IN THIS DOCUMENT.**



DUST BOOT NOT SHOWN FOR CLARITY

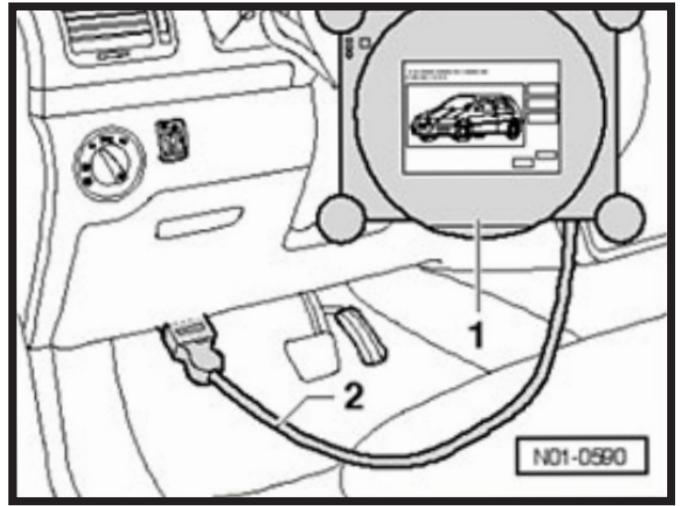
Arnett<sup>®</sup> is committed to the quality of its products. If you have a question or problem with any Arnett product, please contact Arnett by calling 800-251-8993 during normal business hours or email [techassistance@arnottinc.com](mailto:techassistance@arnottinc.com). (In the EU please call +31 (0)73 7850 580 or email [info@arnotteurope.com](mailto:info@arnotteurope.com))

## SYSTEM VENTING OR FILLING

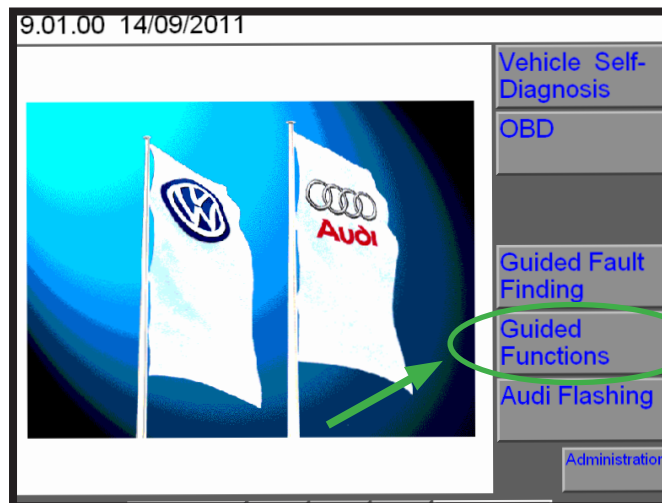
THE FILLING/BLEEDING OF THE AIR SUSPENSION SYSTEM IS PERFORMED USING THE VEHICLE DIAGNOSTIC TESTER.

### VAS PC

1. CONNECT THE VEHICLE DIAGNOSTIC TESTER.



2. SELECT 'GUIDED FUNCTIONS' MODE.

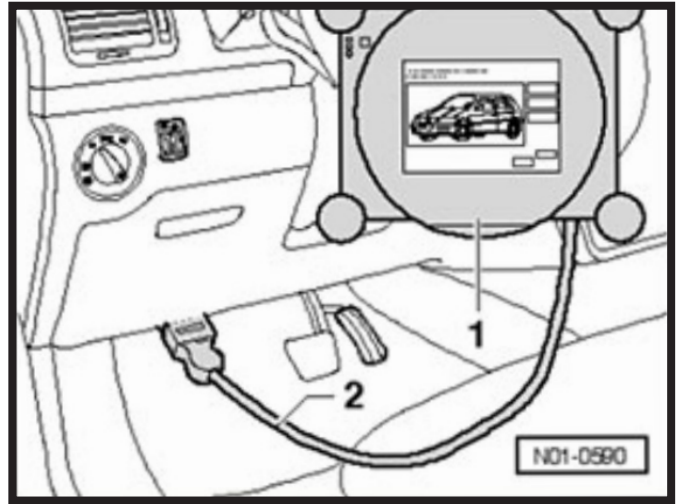


3. SELECT THE "34-LEVEL CONTROL SYSTEM CONTROL MODULE" ADDRESS.
4. SELECT "J197-VENTING OR FILLING THE SYSTEM" AND FOLLOW INSTRUCTIONS ON SCREEN.

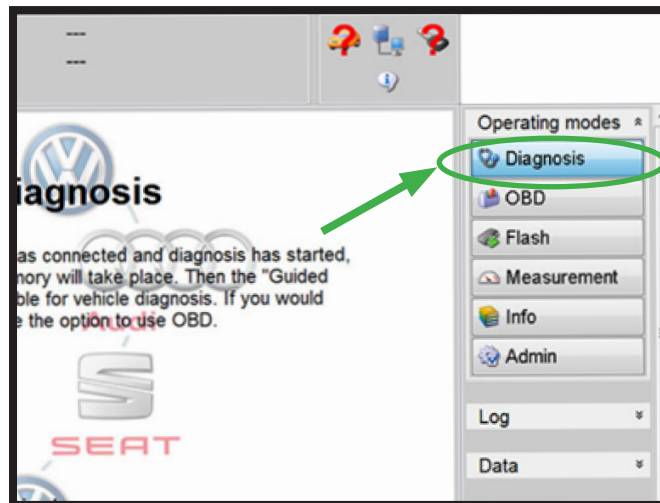
Arnett® is committed to the quality of its products. If you have a question or problem with any Arnett product, please contact Arnett by calling 800-251-8993 during normal business hours or email [techassistance@arnottinc.com](mailto:techassistance@arnottinc.com). (In the EU please call +31 (0)73 7850 580 or email [info@arnotteurope.com](mailto:info@arnotteurope.com))

## ODIS-OFFBOARD DIAGNOSTIC INFORMATION SYSTEM

1. CONNECT THE VEHICLE DIAGNOSTIC TESTER.

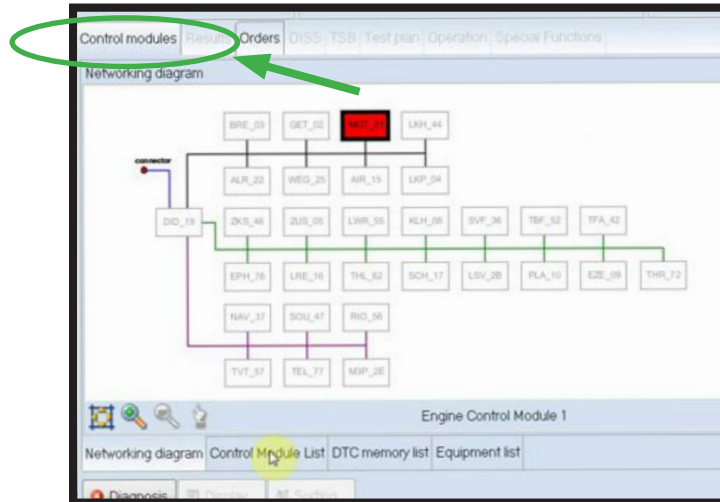


2. SELECT 'DIAGNOSTIC OPERATING MODE' AND BEGIN DIAGNOSTICS.



Arnett® is committed to the quality of its products. If you have a question or problem with any Arnett product, please contact Arnett by calling 800-251-8993 during normal business hours or email [techassistance@arnottinc.com](mailto:techassistance@arnottinc.com). (In the EU please call +31 (0)73 7850 580 or email [info@arnotteurope.com](mailto:info@arnotteurope.com))

3. SELECT THE 'CONTROL MODULES' TAB



4. SELECT THE "34-LEVEL CONTROL SYSTEM CONTROL MODULE" ADDRESS.

5. SELECT "J197-VENTING OR FILLING THE SYSTEM" AND FOLLOW INSTRUCTIONS ON SCREEN.

3. WITH THE AIR SPRING PROPERLY INFLATED AND FULLY SEATED, COMPLETE THE INSTALLATION OF THE AIR SPRING AS DIRECTED BY THE INSTALLATION MANUAL "INSTALLATION STEPS 5-7."



DUST BOOT NOT SHOWN FOR CLARITY

Arnott® is committed to the quality of its products. If you have a question or problem with any Arnott product, please contact Arnott by calling 800-251-8993 during normal business hours or email [techassistance@arnottinc.com](mailto:techassistance@arnottinc.com). (In the EU please call +31 (0)73 7850 580 or email [info@arnotteurope.com](mailto:info@arnotteurope.com))