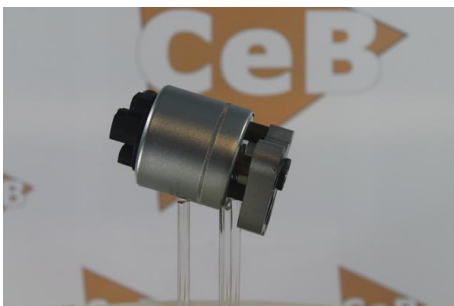
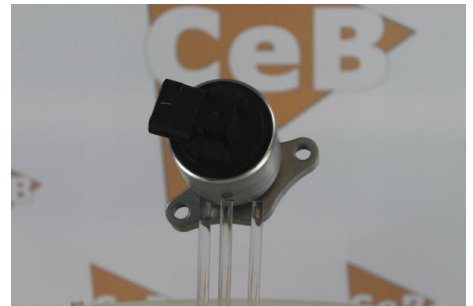
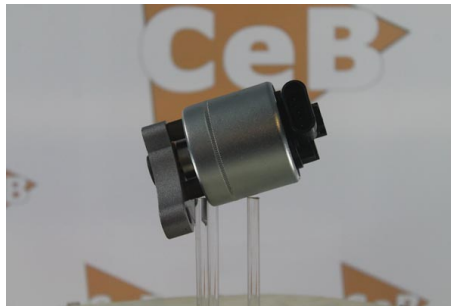
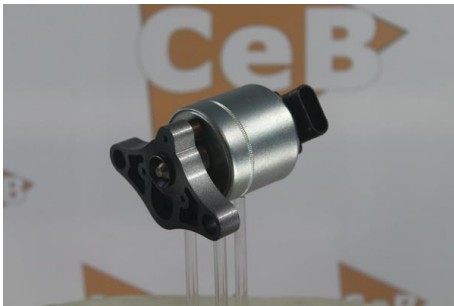


## DONNEES TECHNIQUES

Fonctionnement	électrique
Type de réseau de bord	pour véhicules 12V
Commande	Valve Magnétique
Nombres de pôles	5

## PHOTOS



## DOCUMENTS

CEB-03 Instructions de montage vanes EGR

**APPLICATIONS**

<b>OPEL</b>		
ASTRA G Coupé (F07_) - 1.6 16V	101 ch	03.2000 > 05.2005
ASTRA G (98-05) 3 volumes (F69_) - 1.4 16V	90 ch	09.1998 > 01.2005
ASTRA G (98-05) 3 volumes (F69_) - 1.6	75 ch	09.1998 > 09.2000
	84 ch	09.2000 > 01.2005
	103 ch	12.2002 > 01.2005
ASTRA G (98-05) 3 volumes (F69_) - 1.6 16V	101 ch	09.1998 > 01.2005
ASTRA G (98-05) 3 volumes (F69_) - 1.8 16V	116 ch	09.1998 > 09.2000
ASTRA G (98-05) Cabriolet - 1.6 16V	101 ch	03.2001 > 10.2005
ASTRA G (98-05) Caravan (F35_) - 1.4 16V	90 ch	06.1998 > 07.2004
ASTRA G (98-05) Caravan (F35_) - 1.6	75 ch	02.1998 > 09.2000
	84 ch	09.2000 > 07.2004
ASTRA G (98-05) Caravan (F35_) - 1.6 16V	101 ch	02.1998 > 07.2004
ASTRA G (98-05) Caravan (F35_) - 1.6 CNG	97 ch	03.2003 > 07.2004
ASTRA G (98-05) Caravan (F35_) - 1.8 16V	116 ch	02.1998 > 09.2000
ASTRA G (98-05) CC (F48_, F08_) - 1.4 16V	90 ch	02.1998 > 01.2005
ASTRA G (98-05) CC (F48_, F08_) - 1.6	75 ch	02.1998 > 09.2000
	84 ch	09.2000 > 01.2005
ASTRA G (98-05) CC (F48_, F08_) - 1.6 16V	101 ch	02.1998 > 01.2005
ASTRA G (98-05) CC (F48_, F08_) - 1.8 16V	116 ch	02.1998 > 09.2000
ASTRA G (98-05) Coupe (F07_) - 1.8 16V	116 ch	03.2000 > 10.2000
ASTRA G (98-05) Delvan (F70) - 1.6	75 ch	01.1999 > 09.2000
	84 ch	09.2000 > 04.2005
COMBO C Camionnette/Break - 1.6	87 ch	10.2001 >
COMBO C Tour - 1.6	87 ch	10.2001 >
CORSA C (00-06) (F08, F68) - 1.4	90 ch	09.2000 >
CORSA C (00-06) (F08, F68) - 1.8	125 ch	09.2000 >
MERIVA A (03-10) - 1.6	87 ch	05.2003 > 05.2010
MERIVA A (03-10) - 1.6 16V	100 ch	05.2003 > 01.2006
MERIVA A (03-10) - 1.8	125 ch	05.2003 > 05.2010
TIGRA TwinTop - 1.8	125 ch	06.2004 >
VECTRA B (36_) - 1.6 i 16V	100 ch	10.1995 > 04.2002
VECTRA B (36_) - 1.8 i 16V	115 ch	10.1995 > 09.2000
VECTRA B Caravan (31_) - 1.6 i 16V	100 ch	11.1996 > 07.2002
VECTRA B Caravan (31_) - 1.8 i 16V	115 ch	11.1996 > 09.2000
VECTRA B CC (38_) - 1.6 i 16V	101 ch	10.1995 > 07.2002
VECTRA B CC (38_) - 1.8 i 16V	116 ch	10.1995 > 09.2000
VECTRA C - 1.6 16V	100 ch	06.2004 >
VECTRA C - 1.8	110 ch	04.2002 >
VECTRA C - 1.8 16V	122 ch	04.2002 >
VECTRA C Caravan - 1.6 16V	100 ch	06.2004 >
VECTRA C Caravan - 1.8	122 ch	10.2003 >
VECTRA C GTS - 1.6	100 ch	08.2005 >
VECTRA C GTS - 1.8 16V	110 ch	08.2002 > 12.2006
	122 ch	08.2002 >
ZAFIRA A (99-06) (F75_) - 1.6 16V	101 ch	04.1999 > 06.2005
ZAFIRA A (99-06) (F75_) - 1.6 CNG	97 ch	09.2001 > 06.2005
ZAFIRA A (99-06) (F75_) - 1.8 16V	116 ch	04.1999 > 09.2000