

PRODUCT CONSOLIDATION

BMW Series 3 (E36)



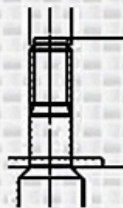
FI084EU

- The different installations can exist in relation to the year as well as the vehicle import or export.
- Monroe® has simplified these installations in order to limit the risk of mistake.
- Example :

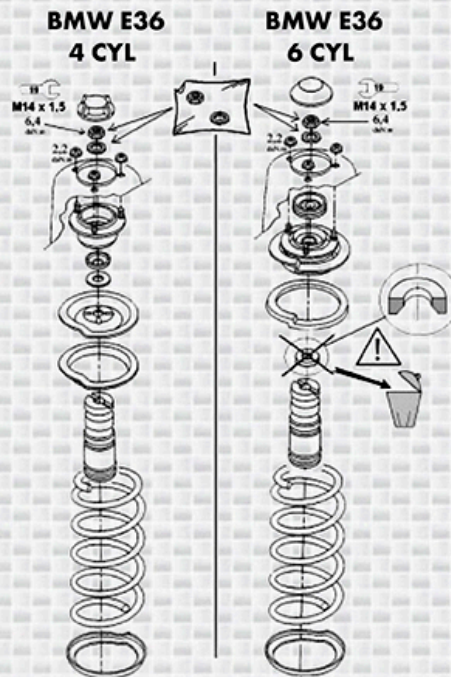
BMW Series 3 (E36)
316i, 318i, 318is, 318tds 06/92 >> 98

Exclude M-Technik
Exclude EAST EUR

REF : E7032



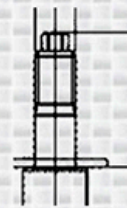
Flat installation



BMW Series 3 (E36)
316i, 318i, 318is, 318tds 06/92 >> 98

Exclude M-Technik
EAST EUR

REF : E7032



Conical Installation

Monroe® proposes one installation only: E7032

Flat installation (if a conical spacer is on the original assembly please remove it. See diagram.)

Old Monroe® part numbers			New Part Number
Original	Sensa-Trac	Reflex	
16570 / 16571	S4461 / 62	E4461 / 62	E4461 / 62
16582 / 16583	S4487 / 88	E4487 / 88	E7032 / 33
16588 / 16589	S4467 / 68	E4467 / 68	E7032 / 33
16590 / 16591	S4417 / 18	E4417 / 18	E7032 / 33
16625 / 16626	S4523 / 24	E4523 / 24	S4523 / 24
16629 / 16630	S4525 / 26		S4525 / 26
16633 / 16634	S4527 / 29	E4527 / 28	E47034 / 35
16635 / 16636	S4531 / 32	E4531 / 32	E4531 / 32
16572 / 16573	S4463 / 64	E4463 / 64	E7036 / 37
16584 / 16585	S4415 / 16	E4415 / 16	E4415 / 16
16627 / 16628	S4521 / 22	E4521 / 22	E7036 / 37
16631 / 16632	S4529 / 30	E4529 / 30	S4529 / 30
	S4596 / 97		E7038 / 39
	S4598 / 99	E4598 / 99	S4598 / 99
23454	S1115	E1115	E1115
	S1113		E1113