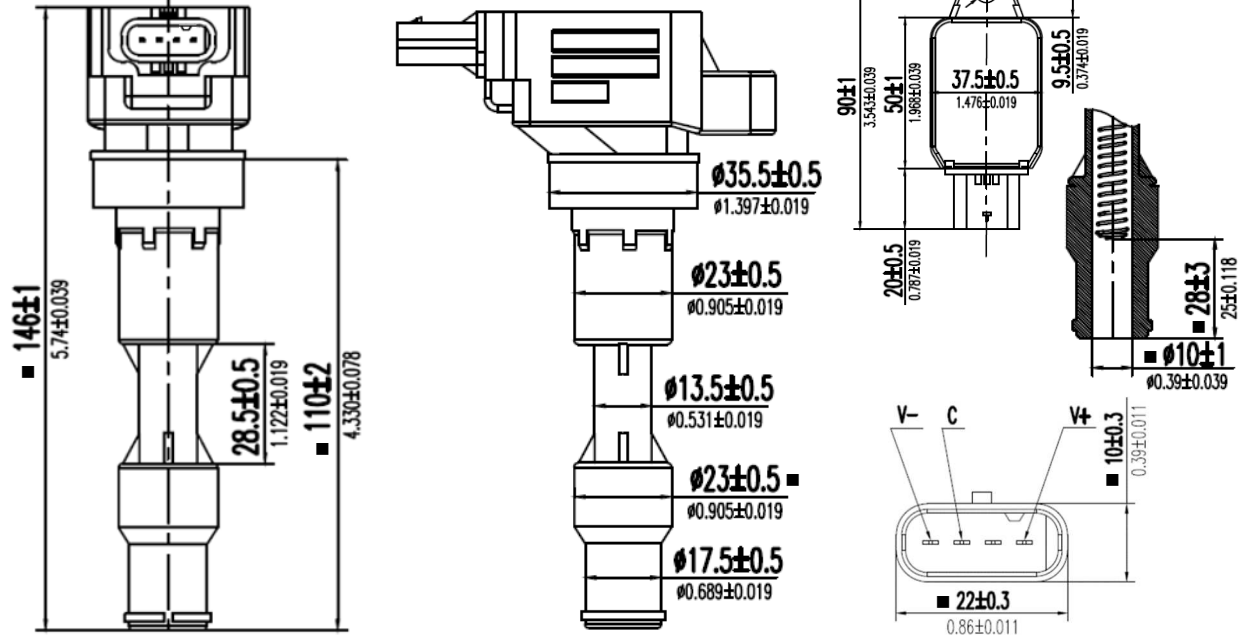


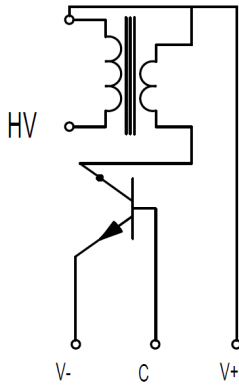
NAME	CK-69 Electrical Specification	NO.	IC-1-1-1121-6
-------------	---------------------------------------	------------	----------------------

1. DRAWING AND DIMENSION.(mm)

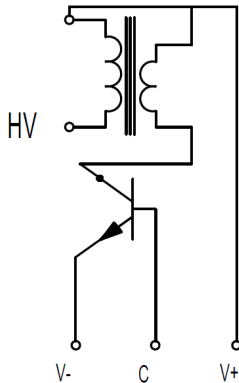
■ Key dimension



2. CIRCUIT DIAGRAM



3.4 TEST CIRCUIT



3. ELECTRICAL PROPERTIES

3.1 DC RESISTANCE : AT $t=25\pm 5^{\circ}\text{C}$

- Primary Resistance : -----
- Secondary Resistance : -----

3.2 INDUCTANCE : AT $t=25\pm 5^{\circ}\text{C}$ $f=1\text{KHz}$

- Primary Inductance : -----
- Secondary Inductance : -----

3.3 OUTPUT VOLTAGE

- AT
- Input Voltage DC : $14\pm 0.5\text{V}$
- Frequency : 50Hz
- LOAD : $50\text{PF} // 1\text{M}\Omega$
- Vout : $\geq 20\text{KV}$
- Dwell : 2.0ms

2020.10.22		1	魯企航	呂漢榮	黃鵬	MOBILETRON
Date of first edition	Date of revised edition	Edition	Manu-script	Review	Approval	Oct.27.2020
						Release