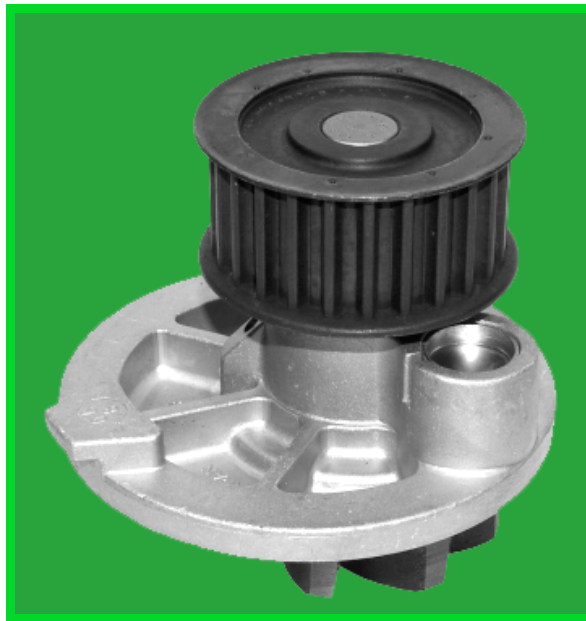


## **BULLETIN 0006**

### **Opel/Vauxhall Fitment - FWP 1575 & FWP 2073**

Following changes to design and specification at O.E. First Line has superseded both FWP 1575 and FWP 2073 by a new reference FWP 2150.



This new pump has the benefit of an evaporation chamber and will replace all applications previously covered by both FWP 1575 and FWP 2073.



Viewed in profile the depth of the latest design pump is clearly much shallower than FWP 1575, and care should be taken to ensure that the pump is correctly located in the engine block.

The older design pumps without evaporation chamber will be no longer available when current stocks are exhausted.