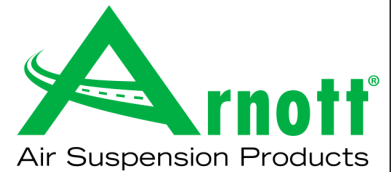


# Installation Manual

A-3233  
ARNOTT  
NEW REAR AIR SPRING  
2013-2019 CADILLAC XTS (EPSILON II)  
W/W-OUT AWD



Congratulations on your purchase of an Arnott® air suspension product. We at Arnott Incorporated are proud to offer a high quality product at the industry's most competitive pricing. Thank you for your confidence in us and our product.

Proper installation is essential to experience and appreciate the benefits of this system. Please take a moment to review these installation instructions before you begin to install these components on your vehicle. The removal and installation of air suspension products should only be performed by a fully qualified, ASE Certified, professional.

It is equally important to be aware of all necessary safety measures while installing your new Air Suspension System. This includes proper lifting and immobilizing of the vehicle and isolation of any stored energy to prevent personal injury or property damage.

## "Engineered to Ride, Built to Last®"



**WARNING:** *The air suspension system is under pressure (up to 10 bar, or 150 lbf/in). Verify pressure has been relieved and disconnect power to the air suspension system prior to disassembly. Do not allow dirt or grease to enter the system. Always wear standard hand, ear, and eye protection when servicing the air suspension system.*

Arnott® is committed to the quality of its products. If you have a question or problem with any Arnott product, please contact Arnott by calling **800-251-8993** during normal business hours or email [techassistance@arnottinc.com](mailto:techassistance@arnottinc.com). (In the EU please call +31 (0)73 7850 580 or email [info@arnotteurope.com](mailto:info@arnotteurope.com))

## GENERAL INFORMATION:

Reading this manual signifies your agreement to the terms of the general release, waiver of liability, and hold harmless agreement, the full text of which is available at [www.arnottinc.com](http://www.arnottinc.com).

- Not to be stored below 5°F (-15°C) and above 122°F (50°C).
- Avoid damage to air lines and cables.
- Removal and installation is only to be performed by fully qualified personnel.
- Use car manufacturer's diagnostic software.

**CAUTION:** *Damage to the vehicle and air suspension system can be incurred if work is carried out in a manner other than specified in the instructions or in a different sequence.*



To avoid the possibility of short circuits while working with electric components consult your owner's manual on how to disconnect your battery.



Consult your vehicle owner's manual, service manual, or car dealer for the correct jacking points on your vehicle and for additional care, safety and maintenance instructions. Under no circumstances should any work be completed underneath the vehicle if it is not adequately supported, as serious injuries and death can occur.



This vehicle contains a "Closed Air Supply System". Replacement of components requires proper adherence to procedures set forth within OE servicing literature. Failure to comply with the OE prescribed procedures can result in component damage and/or failure.

## AIR SPRING REMOVAL

1. RAISE VEHICLE.
2. DEFLATE APPLICABLE AIR SPRING VIA THE VALVE BLOCK. (FIGURE 1)

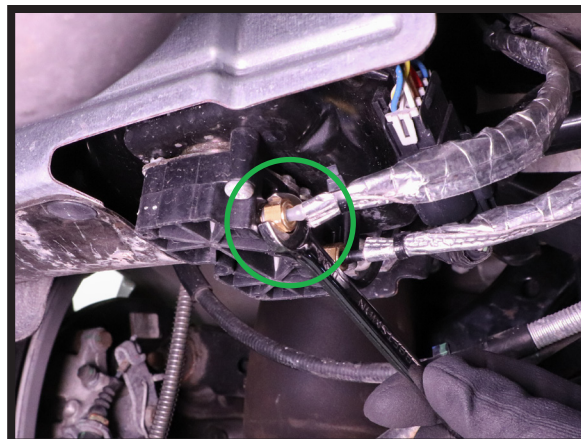


FIGURE 1

3. REMOVE APPLICABLE REAR WHEEL. (FIGURE 2)



FIGURE 2

4. UNCLIP BOTH SIDES OF AIR SPRING TOP AND PULL DOWNWARD. (FIGURE 3)



FIGURE 3

5. REMOVE AIR LINE FROM THE AIR SPRING. (FIGURE 4)



FIGURE 4

6. REMOVE AIR SPRING FROM VEHICLE. (FIGURE 5)



FIGURE 5

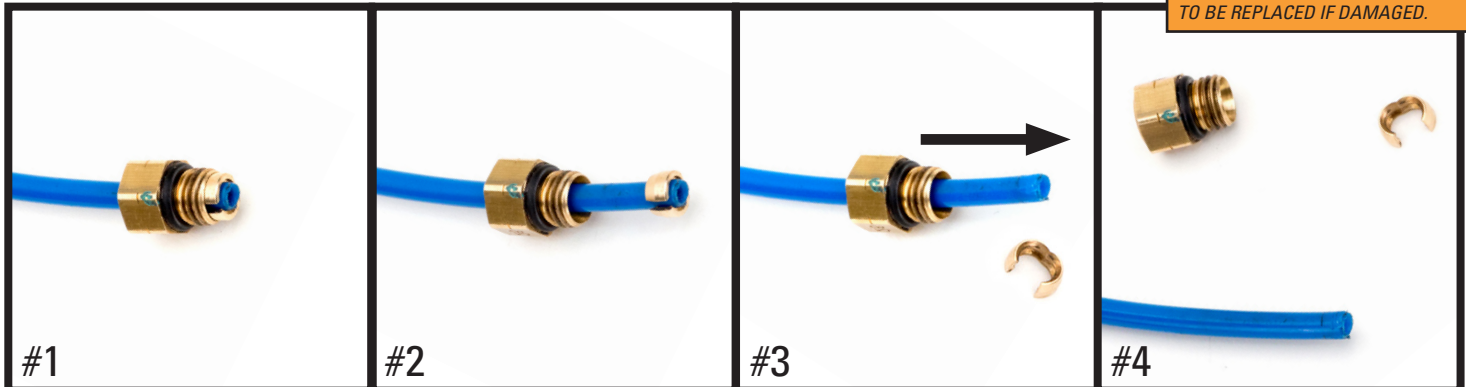
7. REMOVE OLD AIR FITTING FROM AIR LINE ON AIR SPRING SIDE ONLY. USE THE GRAPHIC BELOW AS AN EXAMPLE. (FIGURE 6)

## REMOVAL



*Prior to inserting the existing air line into the new air fitting you will need to remove the old original equipment air line fitting.*

**NOTE:** SCRATCHES AND/OR DEEP CUTS IN THE AIR LINE CAN RESULT IN POSSIBLE LEAKS. INSPECT THE AIR LINE BEFORE INSERTION. AIR LINE NEEDS TO BE REPLACED IF DAMAGED.



OE AIR LINE FITTING

SLIDE THE THREADED PORTION UP THE LINE AND SPREAD THE COLLET OPEN TO REMOVE

SLIDE THE AIR FITTING OFF OF THE AIR LINE

AIR LINE IS READY FOR INSTALLATION

FIGURE 6

8. REMOVAL COMPLETE.

## AIR SPRING INSTALLATION



*Tighten all nuts and bolts to manufacturer's specifications during the installation process.*

1. PULL OUT THE WHITE SHIPPING PIN FROM THE AIR FITTING ON THE ARNOTT AIR SPRING.
2. INSTALL NEW ARNOTT AIR SPRING INTO VEHICLE. (FIGURE 7)



FIGURE 7

3. PUSH AIR LINE INTO FITTING ON NEW ARNOTT SPRING UNTIL IT IS FIRMLY SEATED. (FIGURE 8)



FIGURE 8

4. SECURE BOTH CLIPS ON TOP OF AIR SPRING, ENSURING GUIDE PIN IS IN PROPER POSITION.  
(FIGURES 9, 10)



FIGURE 9

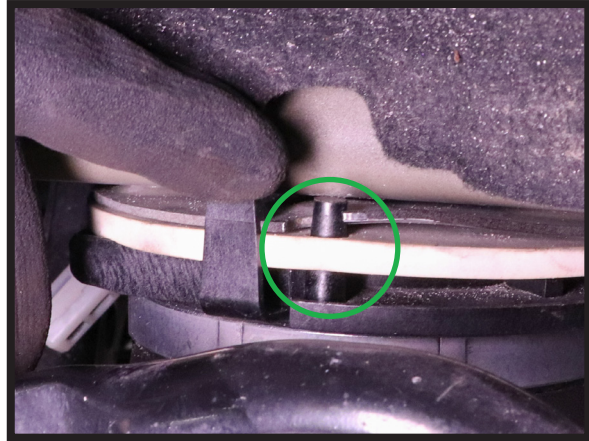


FIGURE 10

5. REINSTALL AIR LINE INTO VALVE BLOCK. TIGHTEN TO MANUFACTURER'S SPECIFICATION.  
(FIGURE 11)

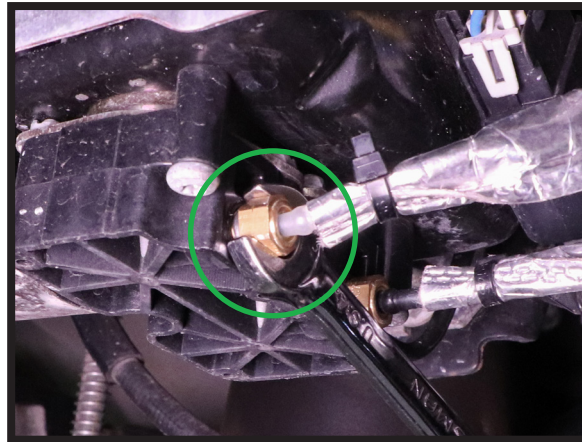


FIGURE 11

6. REINSTALL THE APPLICABLE REAR WHEEL.  
7. INFLATE AIR SPRING PER MANUFACTURER'S SPECIFICATIONS.  
8. LOWER THE VEHICLE.  
9. INSTALLATION COMPLETE.