

Issue No. 1/2015: Turbocharger mounting kits for PSA engines DV6ATED4 and DV6UTED4

These two engines differ primarily in the dimensions of the oil sump, the oil intake manifolds of differing lengths, and the oil dipstick holders. There is a specific turbocharger mounting kit (TK) for each of these two engine versions.

When replacing the turbocharger (item number: 039 TC 17308 000), the specific MAHLE Original mounting kit for the respective engine version should therefore always be used to ensure a safe and professional repair.

039 TK17308 000 (Fig. 1)

- for vehicles with engine type DV6ATED4 (9HX), e.g. Citroën C3, Citroën C4, Citroën Berlingo, Peugeot 207, Peugeot 307, Peugeot 308, Peugeot Partner, Suzuki SX4, Mini



Figure 1: 039 TK17308 000

039 TK17308 010 (Fig. 2)

- for vehicles from model year 2007, with engine type DV6UTED4 (9HU), e.g. Citroën Jumpy, Peugeot Expert, Fiat Scudo

In addition to the specific oil intake manifold, the mounting kits include the oil supply and return lines, various fastening materials, and gaskets.

It is therefore **essential** that the **correct mounting kit** be used.



Figure 2: 039 TK17308 010

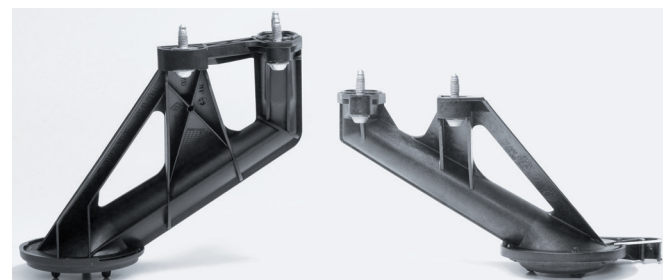


Figure 3: Comparison of oil intake manifolds. Left: Jumpy, Expert, and Scudo. Right: other DV6 engines