



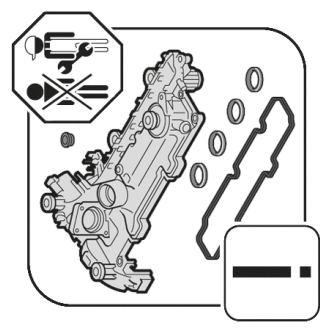
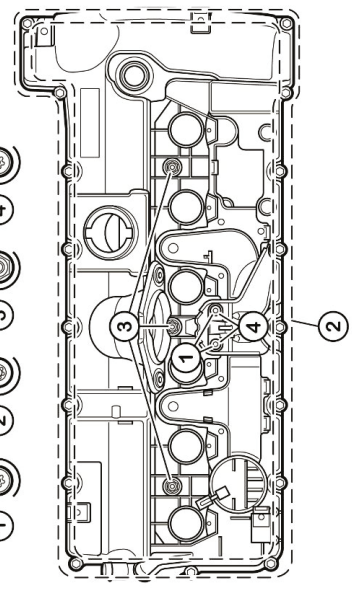
**Anziehvorschrift**  
**Tightening Instruction**  
**Instructions de serrage**  
**Prescripciones de apriete**  
**安装说明**

**477.270**

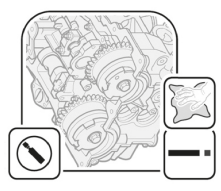


Das Original

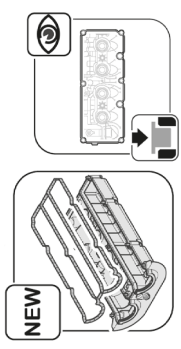
Reihenfolge / Sequence / Commander / Sucesión / 安装顺序



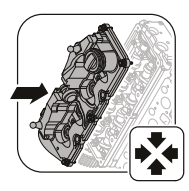
1.



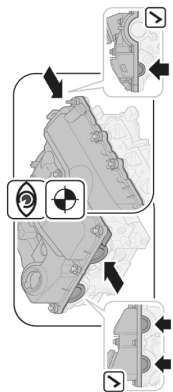
2.



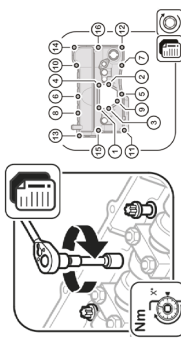
3.



4.



5.



© Elring - Das Original 05/2020 Voo03787

**ElringKlinger AG**  
 Max-Eyth-Straße 2 | D-72581 Dettingen/Erms  
 Fon +49 7123 724-799 | Fax +49 7123 724-798  
 elring@elring.de | www.elring.com



Das Original

Step 标准步骤	Wert/Figure/Value/扭矩	
	metrisch/metric/métrique/米制	US Standard
1.	Pos. 1: loosen	loosen
2.	Pos. 2: M7 / 9 Nm	6.64 ft-lb
3.	Pos. 3: M7 / 9 Nm	6.64 ft-lb
4.	Pos. 2: M7 / 90°	90°
5.	Pos. 3: M7 / 90°	90°
6.	Pos. 4: 5 Nm	3.69 ft-lb



Motortyp / Engine type / Type de moteur / Tipo de motor/ 发动机型号

BMW  
 2.5 - 3.0 L / N51 B30, N52 B25, N52 B30  
 1'(E81/E87), 3'(E90/E91/E92/E93), 5'(E60), 6'(E63/E64), 7'(E65), X1, X3, X5, Z4

**ElringKlinger AG**  
 Max-Eyth-Straße 2 | D-72581 Dettingen/Erms  
 Fon +49 7123 724-799 | Fax +49 7123 724-798  
 elring@elring.de | www.elring.com



© Elring - Das Original 05/2020