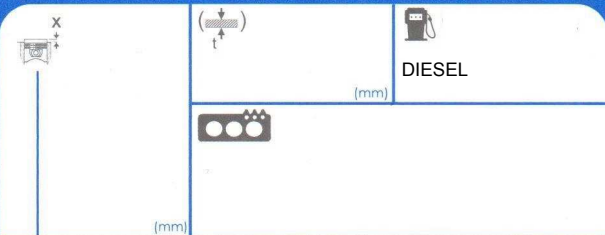


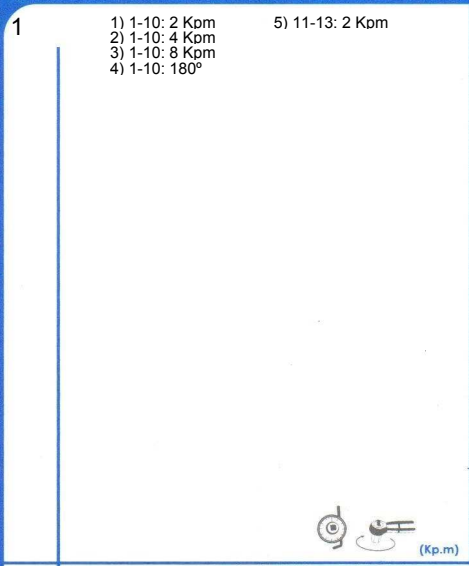
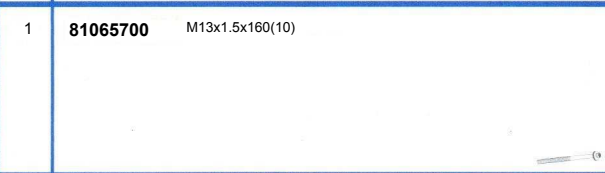
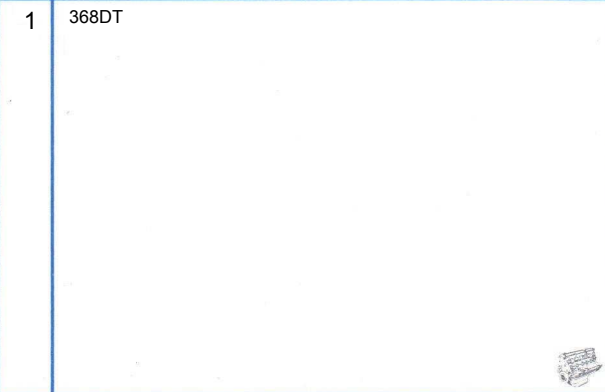
10222620

R012618

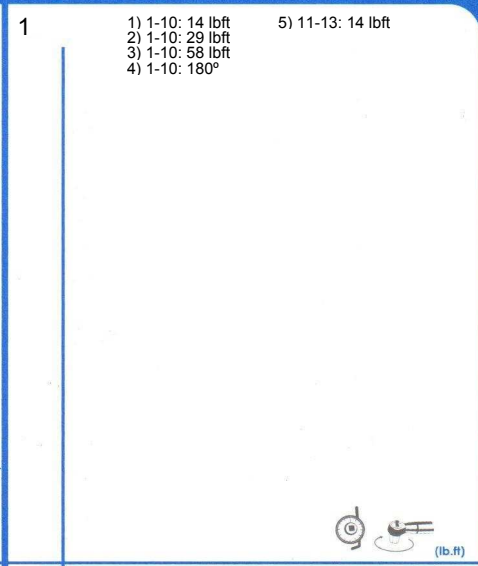
LAND ROVER



c.c. 3628 (cm3) 81 (mm)



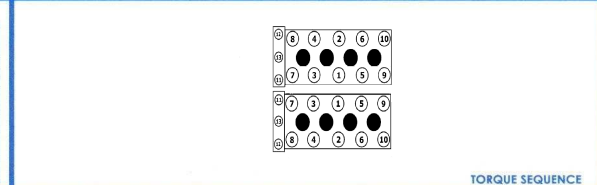
RETIGHTENING



RETIGHTENING

ROUGHNESS

	MLS	
ALUMINIUM ALUMINIO	0.5 / 1.0 µm	2.3 µm MAX
CAST IRON FUNDICIÓN	1.5 / 1.8 µm	3.8 µm MAX



-90° +
-180°
<>

LOOSEN 90° AND TIGHTEN BOLT BY BOLT RESPECTING THE SPECIFIED TORQUE AND ORDER.
 AFLOJAR 90° Y APRETAR TORNILLO A TORNILLO CON EL PAR Y ORDEN ESPECIFICADOS.
 SLOOSEN 90° AND TIGHTEN BOLTS.
 AFLOJAR TODOS LOS TORNILLOS.
 RUN THE ENGINE UNTIL TOTAL OPENING OF THE THERMOSTAT (LET THE ENGINE COOL DOWN FOR 4 HOURS WITH OPEN BONNET).
 ROTAR EL MOTOR HASTA LA APERTURA TOTAL DEL TERNOSTATO.
 DEJAR ENRIAR EL MOTOR (CUATRO HORAS (CAPOT ABIERTO)).
 ABRIR EL TAPON DEL VASO DE EXPANSION DEL CIRCUITO DEL AGUA DE REFRIGERACION.

AJUSA IS NOT RESPONSIBLE FOR ANY UPGRADE AFTER THIS DOCUMENT HAD BEEN PRINTED. FOR MORE INFO, PLEASE SCAN THIS QR CODE OR VISIT OUR WEBSITE www.ojusa.es.
 AJUSA NO SE RESPONSABILIZA DE CUALQUIER ACTUALIZACION POSTERIOR A LA IMPRESION DE ESTE DOCUMENTO. PARA MAYOR INFORMACION CAPTURE CON SU SMARTPHONE EL SIGUIENTE CODIGO QR O VISITE NUESTRA PAGINA WEB www.ojusa.es.