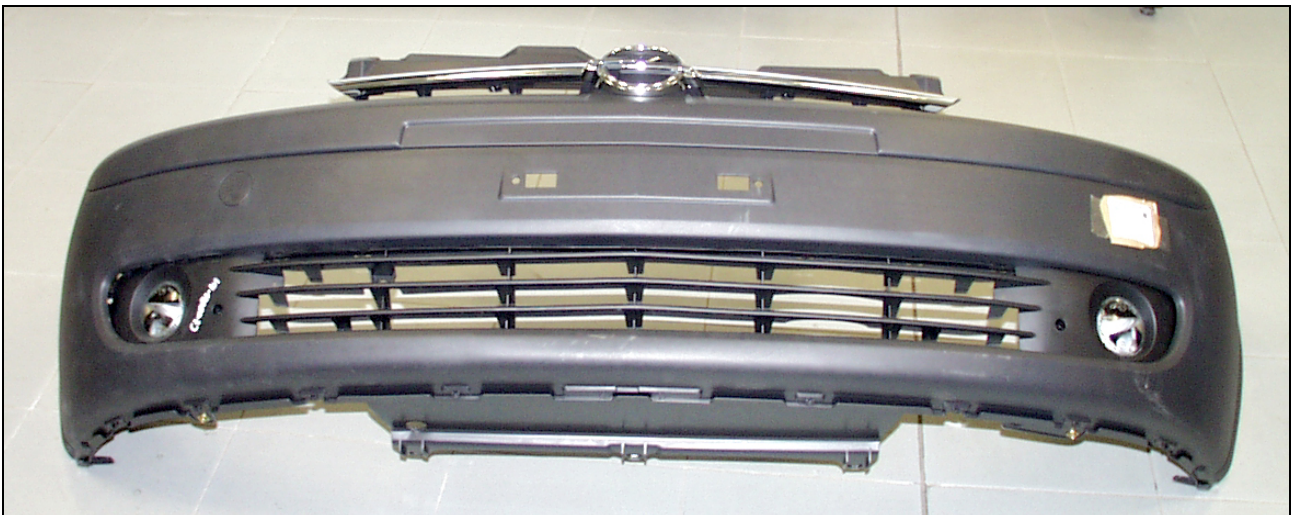


| | |
|---|---|
| DATOS DE LA PIEZA A CERTIFICAR: PART DESCRIPTION | |
| Denominación: REJILLA INFERIOR DE PARAGOLPES DELANTERO (CON ALOJAMIENTO FAROS) Name: Front bumper bottom grille (with holes for lamps) | |
| Adaptable a: OPEL CORSA (00) Adaptable to | |
| Fabricado por: EUROSTAMP, S.r.l Manufactured by | |
| Ref. fabricante: 101.08.7101 Manufacturer reference | Ref. Constructor: 1400677 O.E.M. reference |
| Nº Certificación: 14 071 14 03 Certification number | |



Valorando lo resultados obtenidos en los ensayos y verificaciones a los que ha sido sometida la pieza de recambio, el dictamen final es:
 Having analyzed the results of the test to which spare part has been subjected, the final decision is:

RESULTADO DE LA PIEZA
 Spare part result

CERTIFICADA **NO CERTIFICADA**
 Approved Fail

| 1. CONTROL DE MATERIAL MATERIAL CONTROL | | |
|--|----------------------|---|
| ENSAYO Test | RESULTADO Result | OBSERVACIONES OBSERVATION |
| Tipo de material Material | PP+EPDM | Cumple requisitos CZ It is according to requirements of CZ |
| Espesor de la pieza (mm) Part thickness | 2,70 | Consultar informe IE-019-06 See report IE-019-06 |
| Espesor armazón (mm) Frame thickness | NP | |
| Espesor cierre (mm) Fastener thickness | NP | |
| Masa de la pieza (Kg) Weight | 0,621 | Consultar informe FC-CE-018-03 (masaCO-16) See report FC-CE-018-03 (weightCO-16) |
| Embutición (mm) Ball punch deformation test | NP | |
| Prestaciones Mecánicas Impact resistance | NP | |
| Envejecimiento Acelerado Colour resistance | Conforme Approved | Cumple requisitos CZ It is according to requirements of CZ |
| Resistencia al calor (%) Heat resistance | Conforme Approved | Cumple requisitos CZ It is according to requirements of CZ |
| Resistencia combustible (%) Fuel resistance | NP | |
| CALIFICACIÓN DEL CONTROL DEL MATERIAL Test result | | CONFORME APPROVED |

| 2. CONTROL DE LA PIEZA (ADAPTABILIDAD E INSPECCIÓN PREVIA) PART CONTROL (ADAPTABILITY PREVIOUS INSPECTION) | | |
|--|--|---|
| ENSAYO <small>Test</small> | RESULTADO <small>Result</small> | OBSERVACIONES <small>OBSERVATION</small> |
| Inspección previa <small>Previous inspection</small> | Conforme <small>Approved</small> | Consultar informe 06073IP-AD01-HR01 <small>See report 06073IP-AD01-HR01</small> |
| Tiempo de montaje (u.t) <small>Assembly time</small> | 4,13 | Consultar informe 06073TM01-HR01 <small>See report 06073TM01-HR01</small> |
| Proceso de trabajo <small>Assembly process</small> | Similar a constructor <small>Similar to O.E.M.</small> | Consultar informe 06073IP-AD01-HR01 <small>See report 06073IP-AD01-HR01</small> |
| Montaje de accesorios <small>Adaptability of Accessories</small> | Conforme <small>Approved</small> | Consultar informe 06073IP-AD01-HR01 <small>See report 06073IP-AD01-HR01</small> |
| Holguras <small>Gaps</small> | Similar a constructor <small>Similar to O.E.M.</small> | Consultar informe 06073IP-AD01-HR01 <small>See report 06073IP-AD01-HR01</small> |
| Paralelismos <small>Parallelism</small> | Similar a constructor <small>Similar to O.E.M.</small> | Consultar informe 06073IP-AD01-HR01 <small>See report 06073IP-AD01-HR01</small> |
| Alineaciones <small>Alignment</small> | Similar a constructor <small>Similar to O.E.M.</small> | Consultar informe 06073IP-AD01-HR01 <small>See report 06073IP-AD01-HR01</small> |
| Funcionalidad <small>Functional features</small> | Conforme <small>Approved</small> | Consultar informe 06073IP-AD01-HR01 <small>See report 06073IP-AD01-HR01</small> |
| CALIFICACIÓN DEL CONTROL DE LA PIEZA <small>Test result</small> | | CONFORME <small>APPROVED</small> |

| 3. CONTROL DE RECUBRIMENTOS COATING CONTROL | | |
|---|----------------------|---|
| ENSAYO Test | RESULTADO Result | OBSERVACIONES OBSERVATION |
| Espesor, e_e (μm) Thickness | NP | |
| Dureza Hardness | Conforme Approved | Cumple requisitos CZ It is according to requirements of CZ |
| Embutición (mm) Ball punch deformation test | NP | |
| Corrosión roja (nº horas) Corrosion resistance | NP | |
| Adherencia Adhesion | NP | |
| Resistencia al lavado alta presión High pressure resistance | NP | |
| Resistencia del recubrimiento a los disolventes Solvent resistance | NP | |
| CALIFICACIÓN DEL CONTROL DE RECUBRIMENTOS Test result | | CONFORME APPROVED |

| 4. CONTROLES ADICIONALES ADDITIONAL CONTROL | | |
|--|----------------------|---|
| ENSAYO Test | RESULTADO Result | OBSERVACIONES OBSERVATION |
| Material en sistemas de unión Material in joining parts | NP | |
| Materiales de subestructuras Reinforcement material | NP | |
| Cumple funcionalidad Functional features | NP | |
| Área soldada (mm ²) Welded area | NP | |
| Distancia (mm) entre puntos soldadura Distance between spots weld | NP | |
| Puntos soldadura defectuosos Quality of sports weld | NP | |
| Formas geométricas Geometrical shape | Conforme Approved | Sin partes puntiagudas, ni cortantes, ni susceptibles de enganches Without sharp and pointed parts |
| Orientación superficies laterales Lateral surface orientation | Conforme Approved | Vuelta al exterior Turn over to external side |
| CALIFICACIÓN DE LOS CONTROLES ADICIONALES Test result | | CONFORME APPROVED |

| 5. COMPORTAMIENTO MECÁNICO MECHANICAL BEHAVIOR | | |
|--|---------------------|------------------------------|
| ENSAYO Test | RESULTADO Result | OBSERVACIONES OBSERVATION |
| Diferencia de retroceso (cm) Diference in backward movement | | |
| Forma de plegado Folded shape | | |
| Adhesivo y sellante Mastic behavior | | |
| Cierre Fastener behavior | | |
| Crash-Test frontal Frontal crash-test | | |
| Crash-Test oblicuo Lateral crash-test | | |
| CALIFICACIÓN DEL COMPORTAMIENTO MECÁNICO Test result | | NO PROCEDE NOT APPLICABLE |

ANEXO 1 – REPORTAJE FOTOGRÁFICO DE LA ADAPTABILIDAD

ANNEX 1 – ADAPTABILITY PHOTO DOCUMENTATION

Muestra Constructor
O.E.M. Part

Muestra Fabricante
Spare Part

